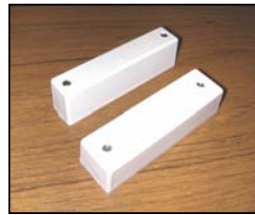


Magnet

Resistor Combinations	
<i>Specified by Panel Manufacturer</i>	
1/. Reed <i>(Series Parallel)</i>	2/. EOL <i>(Series)</i>
1KR	1KR
2K2	2K2
4K7	2K2
4K7	4K7
6K8	4K7
8K2	8K2



Description:

Grade 2 Class II
Industrial Surface Contact, Pre-set pre-fitted resistors potted Single Reed.

Operating Gap:

40mm (Approx)

Materials:

High Impact Polystyrene
Potted Reed

Magnets: Ferrite or Alnico V

Contact Material: Rhodium

Voltage Range:

1 – 100v DC
125v AC Max

Switching Current

500mA Max DC
500mA Max AC

Temperature Range:

-40°C - +50°C

Resistor Combinations:

See Inset Panel
Call for options.

Colours:

White (No Suffix)
Brown (Suffix B)

Fixing Screws Provided

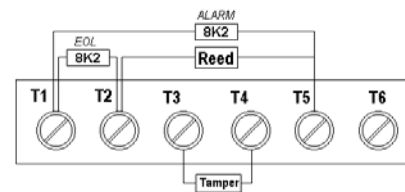
WITH LID TAMPER CE.

Connect Alarm wires to T1 and T5 to give 8K2 on the open circuit.

The EOL resistor connected between T1 and T2 will give 4K1 on closed circuit.

The magnet side needs to be fitted between 40mm away from the reed side.

The 3rd and 4th terminals are for the lid tamper.



KNIGHT

FIRE & SECURITY PRODUCTS LTD

<mailto:info@knightfireandsecurity.com>

Unit 84 Seawall Road Ind. Estate
Cardiff UK CF24 5TH

Tel: 0 (00 44) 29 20 48 81 29

Fax: 0 (00 44) 29 20 48 91 32

Drwng No: PDD708K2

Drawn: Chris Moorman

Date: 07/02/09

All units in mm
Do not scale



© Knight Fire & Security Products Ltd
All cases of TM Infringement will be pursued.