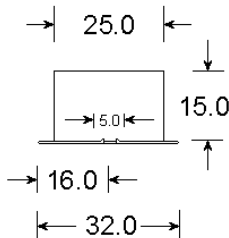
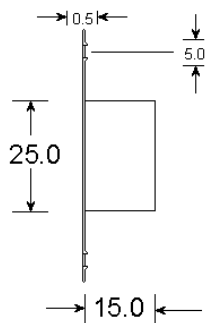
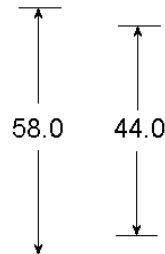
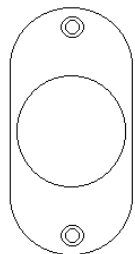


1/. Reed (Ser. Parallel)	2/. EOL (Series)
1KR	1KR
2K2	2K2
4K7	4K7
4K7	2K2
4K7	6K8
8K2	8K2
See separate Sheet	

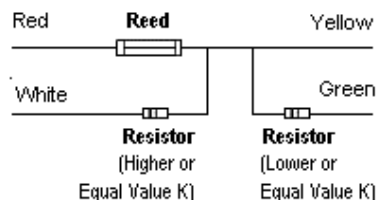


Magnet



Sealed against outside attack.

Can be used with just the reed switch and no resistors – connect the yellow wire and the red wire.
 To include 1 resistor, twist the red & white wires together to link, then connect the yellow wire.
 To include 2 resistors, twist the red & white wires together to link then connect the green wire.
 Black and blue wires are the tamper loop.
 The magnet side needs to be fitted 25-30mm away from the reed side.



Description:
 Grade 2 Class III
 6 Terminal Flush Contact Double Reed 6 Core with Pre-set, pre-fitted resistors.

Operating Gap:
 25-30mm (Approx)

Materials:
 High Impact Polystyrene
 Stainless Steel Plate

Magnet:
 Ferrite or Alnico V

Contact Material:
 Rhodium

Voltage Range:
 1 – 100v DC
 125v AC Max

Switching Current
 500mA Max DC
 500mA Max AC

Temperature Range:
 -40°C - +50°C

Colours:
 White (No Suffix)
 Brown (Suffix B)
 Fixing Screws Provided

KNIGHT

FIRE & SECURITY PRODUCTS LTD

<mailto:info@knightfireandsecurity.com>

Unit 84 Seawall Road Ind. Estate
 Cardiff UK CF24 5TH

Tel: 0 (00 44) 29 20 48 81 29

Fax: 0 (00 44) 29 20 48 91 32

Drawing No: PDA90

Drawn: Chris Moorman

Date: 04/02/09

All units in mm
 Do not scale



The portrayed information is © Knight Plastics Ltd
 All cases of TM Infringement will be persued.