

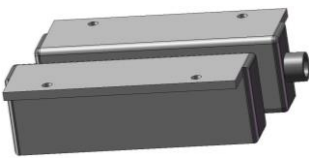
The YH10A-PA-HO is an angle contact with built in resistors. It **must** be wired in a fully supervised (EOL) format – it will not function as part of a 4-wire installation. The contact is potted for environmental protection and comes complete with armoured cable sleeving. Resistors are chosen by cable selection. Magnetic interference detection is achieved by the use of biased reeds.

**Operation:**

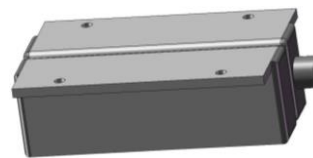
The contact will operate with a gap of approximately 35mm between the magnet and reed and will break at 45mm. This distance will vary near magnetic surfaces.

**Installation:**

Fix the backplate to the mounting surface using the fixing holes provided. Ensure the distance between the magnet and contact is less than 35mm – ideally around 15mm. It is vital to ensure that the contact and magnet line up horizontally to within 5mm of each other. Tamper/fault issues will arise from misaligned units.



⊘  
 Contact misaligned  
 >5mm

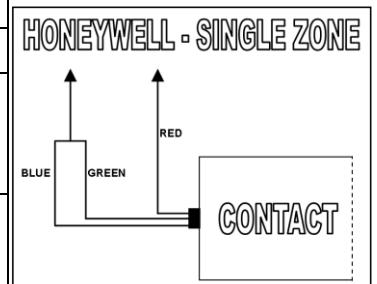


✓  
 Contact and magnet  
 correctly aligned

**Single Zone Wiring:**

Connect your zone wires as shown in the table below. Where two colours are listed, they are intended to be joined together to form the zone wire. We recommend joining wires in a suitable junction box. A Honeywell (1k/1k) example is shown for reference.

PANEL	EOL	ALARM	Wiring to panel	
			Connection 1	Connection 2
Honeywell / Ademco	1k	1k	RED	GREEN & BLUE
PACOM	10k	10k	BLACK	GREEN & WHITE

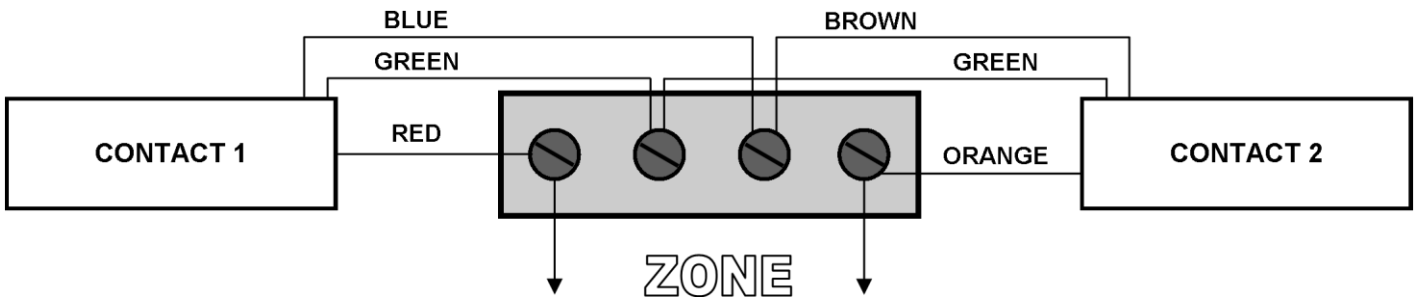


**Ensure that unused/trimmed wires are insulated. Shorting of unused wires will affect operation.**

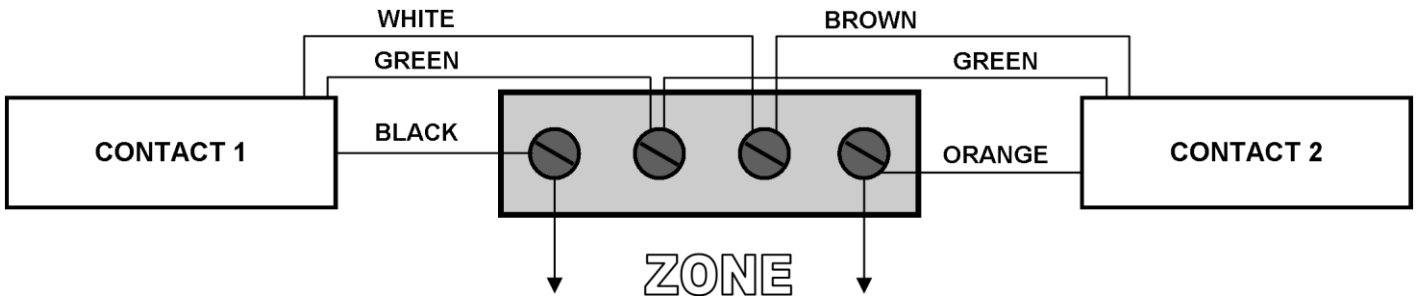
**Shared Zone Wiring:**

Two YH10A-PA-HO contacts can share a zone. For this setup, refer to the diagrams below. Using a suitable junction box for joining wires is strongly recommended.

**Wiring – Honeywell**



**Wiring - PACOM**



**Shared Zone Resistance Table**

The following table shows the resistance across the zone in each situation. Ensure your panel will not fault/tamper on the following resistances:

PANEL	Contact 1 & 2 SET (closed)	Contact 1 OPEN	Contact 2 OPEN	Contact 1 & 2 OPEN
Honeywell / Ademco	1k	2k	2k	2k
PACOM	10k	20k	20k	20k

**Ensure that unused/trimmed wires are insulated. Shorting of unused wires will affect operation.**