

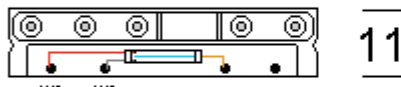
7



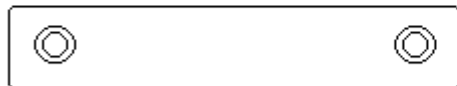
52.5



67



48



52.5

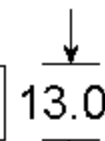


Magnet

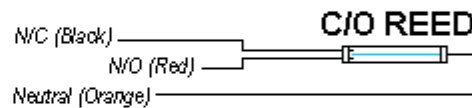


67

15



13.0

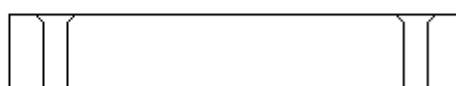


C/O REED

N/C (Black)

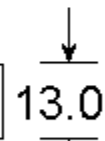
N/O (Red)

Neutral (Orange)



67

15



13.0



Description:

Grade 1 Class II
5 Terminal Contact
Change Over Reed

Operating Gap:

20mm (Approx)

Materials:

High Impact Polystyrene

Magnet:

Ferrite or Alnico V

Contact Material:

Rhodium

Voltage Range:

1 – 100v DC
125v AC Max

Switching Current

500mA Max DC
500mA Max AC

Temperature Range:

-40°C to +50°C

Colours:

White (No Suffix)
Brown (Suffix B)

Fixing Screws Provided

KNIGHT

FIRE & SECURITY PRODUCTS LTD

<mailto:info@knightfireandsecurity.com>

Unit 84 Seawall Road Ind. Estate

Cardiff UK CF24 5TH

Tel: 0 (00 44) 29 20 48 81 29

Fax: 0 (00 44) 29 20 48 91 32

Drawing No: **D50**

Drawn: *Chris Moorman*

Date: *04/09/09*

All dimensions in mm
Do not scale



© Knight Fire & Security Products Ltd
All cases of TM Infringement will be pursued.